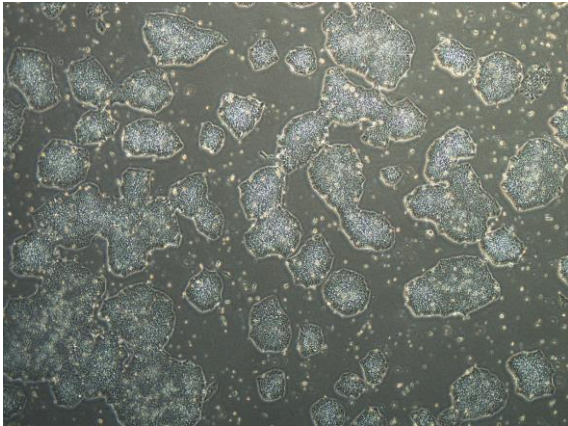
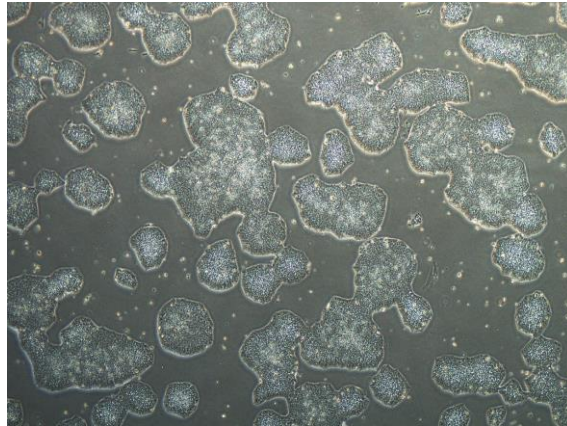


【 CiRA-j-1387 】 Morphology of iPSC colonies

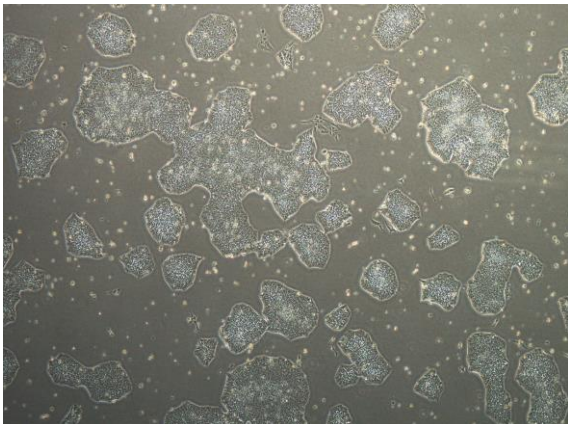
CiRA-j-1387-A: passage-3



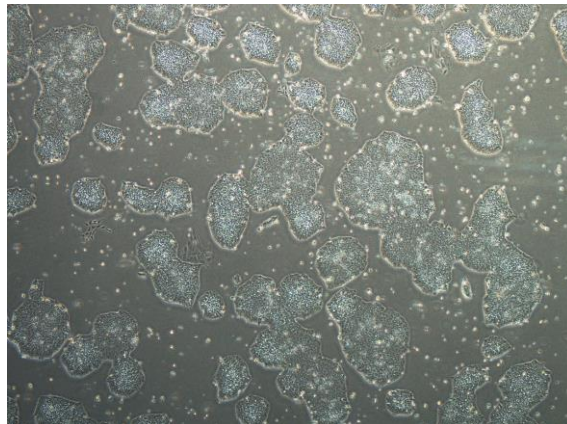
CiRA-j-1387-B: passage-3



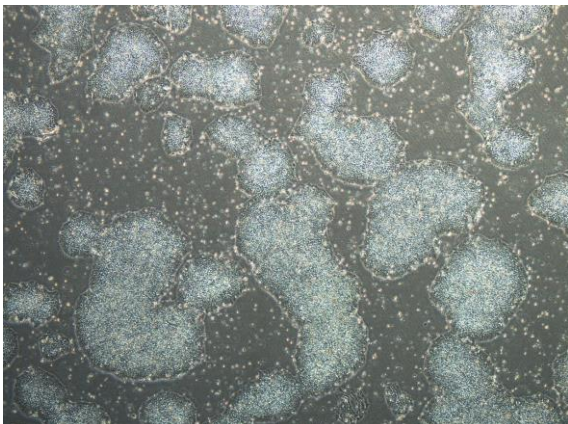
CiRA-j-1387-C: passage-3



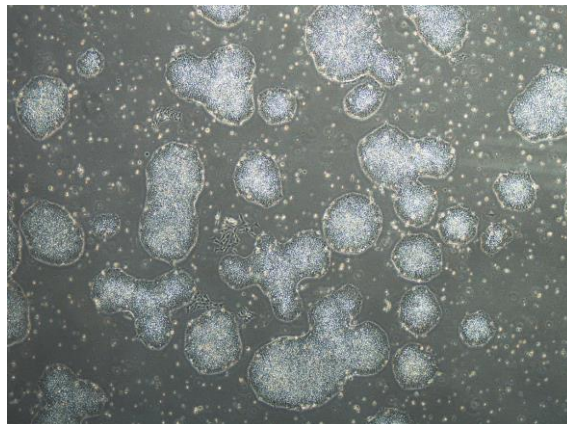
CiRA-j-1387-D: passage-3



CiRA-j-1387-E: passage-3



CiRA-j-1387-F: passage-3



(All images were captured at 4x magnification)